



# Community Benefits Report

HUGGINS HOSPITAL // FISCAL YEAR 2023

## OUR VISION

Huggins will be the community's home for health and wellbeing. Our mission is to empower the fulfillment of life through better health.

# FORM NHCT31: COMMUNITY BENEFITS PLAN REPORT



## Section 1: Entity Information

### Entity Name

Huggins Hospital

### State Registration #

29

### Federal ID #

2022332

### Fiscal Year Beginning

10/01/2022

### Entity Address

240 South Main St, Wolfeboro, NH 03894

Wolfeboro, New Hampshire 03894

### Entity Website (must have a prefix such as "http://www.")

<http://www.hugginshospital.org>

### Chief Executive Officer (first, last name)

First Name	Last Name
Jeremy	Roberge

### Board Chair (first, last name)

First Name	Last Name
Corrine	Smith

### Community Benefits Plan - Contact (first, last name)

First Name	Last Name
Monika	O'Clair

### Title

Chief Strategy Officer

### 1. Is the entity's community benefits plan on the organization's website?

Yes

### 2. Does the report include community benefit information for affiliated or subsidiary entity(ies)?

No

## SECTION 2: MISSION & COMMUNITY SERVED

**MISSION STATEMENT:** Huggins Hospital's Mission is to empower the fulfillment of life through better health.

**HAS THE MISSION STATEMENT BEEN REAFFIRMED IN THE PAST YEAR (RSA 7:32E-I)?** Yes

### SERVICE AREA

Community may be defined as a geographic service area comprised of the locations from which most service recipients come (primary service area) or a subset of the general population that share certain characteristics such as age range, health condition, or socioeconomic resources. For some trusts, the definition of community may be a combination of geographic service area and a subset of the population within that area. Please include information from the drop down lists and narrative field as applicable to sufficiently describe the community served.

**DID THE PRIMARY SERVICE AREA COVER ALL OF NEW HAMPSHIRE?**

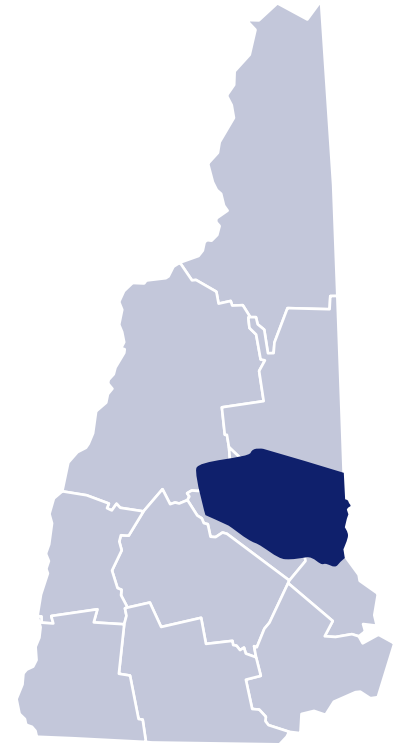
No

**PLEASE SELECT SERVICE AREA COUNTIES (NH), IF APPLICABLE:**

Carroll  
Belknap  
Strafford

**PLEASE SELECT SERVICE AREA MUNICIPALITIES (NH), IF APPLICABLE**

Alton  
Brookfield  
Effingham  
Middleton  
Moultonborough  
New Durham  
Ossipee  
Sandwich  
Tamworth  
Wakefield  
Wolfeboro



### SERVICE POPULATION DESCRIPTION

Huggins Hospital serves the entire population of its service area. The community is rural in nature and has a typical seasonal population increase in the summer (which has been growing to include more than just the summer months in recent years). In a typical year, the population swells from approximately 40,000 to about 120,000 in the summer tourist season.

## SECTION 3.1: COMMUNITY NEEDS ASSESSMENT

In what year was the last community needs assessment conducted to assist in determining the activities to be included in the community benefit plan? 2022

Please attach a copy of the needs assessment if completed in the past year

CHNA and Implementation Plan 2022.pdf - 03/13/2024 04:25 PM

<https://www.hugginshospital.org/about/community-health-needs-assessment>

Was the assessment conducted in conjunction with other health care charitable trusts in your community? No

## SECTION 3.2: COMMUNITY NEEDS ASSESSMENT

AREA OF COMMUNITY NEED / CONCERN: 3. Access to Primary Care

Is the need identified in the Community Needs Assessment? Yes

Is the need addressed in the Health Care Charitable Trusts Community Benefit Plan? Yes

Select the applicable Category or Categories of Community Benefit included in your plan associated with this need. C10: Other Subsidized Health Services

Brief description of major strategies or activities to address this need (optional)

Primary Care services offered in designated rural areas

## SECTION 3.2: COMMUNITY NEEDS ASSESSMENT

AREA OF COMMUNITY NEED / CONCERN: 35. Other Social Determinants of Health

Is the need identified in the Community Needs Assessment? Yes

Is the need addressed in the Health Care Charitable Trusts Community Benefit Plan? Yes

Select the applicable Category or Categories of Community Benefit included in your plan associated with this need. F6: Coalition Building

Brief description of major strategies or activities to address this need (optional)

Operations of Huggins Community Health Network, a network of local healthcare and social service providers that evaluate gaps in care and service, and work to close those gaps.

## SECTION 3.2: COMMUNITY NEEDS ASSESSMENT

AREA OF COMMUNITY NEED / CONCERN: 20. Mental Health

Is the need identified in the Community Needs Assessment? Yes

Is the need addressed in the Health Care Charitable Trusts Community Benefit Plan? Yes

Select the applicable Category or Categories of Community Benefit included in your plan associated with this need. F6: Coalition Building and C10: Other Subsidized Health Services

Brief description of major strategies or activities to address this need (optional)

Operations of Huggins Community Health Network, a network of local healthcare and social service providers that evaluate gaps in care and service, and work to close those gaps. We also provide Counseling Services for our community.

# SECTION 4: COMMUNITY BENEFIT ACTIVITIES

## Financial Assistance, Means-Tested Government Programs and Community Benefit Services

**TOTAL FUNCTIONAL EXPENSES FOR THE REPORTING YEAR: \$97,760,447**

### (1) Financial Assistance at cost

Total community benefit expense: \$952,127

Direct offsetting revenue: 0

Net community benefit expense: \$952,127

Percent of total expense: 1%

Estimated expense of activities projected for the next Fiscal Year: \$980,690.81

### (2) Medicaid

Total community benefit expense: \$10,957,234.45

Direct offsetting revenue: \$6,951,211.59

Net community benefit expense: \$4,006,022.86

Percent of total expense: 4.1%

Estimated expense of activities projected for the next Fiscal Year: \$4,000,000

### (3) Costs of other means-tested government programs

Total community benefit expense: \$0

Direct offsetting revenue: \$0

Net community benefit expense: \$0

Percent of total expense: 0%

Estimated expense of activities projected for the next Fiscal Year: \$0

### (4) Total Financial Assistance and Means-Tested Government Programs

Total community benefit expense: \$11,909,361.45

Direct offsetting revenue: \$6,951,211.59

Net community benefit expense: \$4,958,149.86

Percent of total expense: 5.1%

Estimated expense of activities projected for the next Fiscal Year: \$4,980,690.81

### (5) Community health improvement services and community benefit operations

Total community benefit expense: \$649,731.81

Direct offsetting revenue: \$0

Net community benefit expense: \$649,731.81

Percent of total expense: 0.7%

Estimated expense of activities projected for the next Fiscal Year: \$670,000

# SECTION 4: COMMUNITY BENEFIT ACTIVITIES CONTINUED

**TOTAL FUNCTIONAL EXPENSES FOR THE REPORTING YEAR: \$97,760,447**

## **(6) Health professions education**

Total community benefit expense: \$405,175.73

Direct offsetting revenue: \$0

Net community benefit expense: \$405,175.73

Percent of total expense: 0.4%

Estimated expense of activities projected for the next Fiscal Year: \$417,000

## **(7) Subsidized health services**

Total community benefit expense: \$17,995,011.91

Direct offsetting revenue: \$13,798,621.69

Net community benefit expense: \$4,196,390.22

Percent of total expense: 4.3%

Estimated expense of activities projected for the next Fiscal Year: \$4,322,281

## **(8) Research**

Total community benefit expense: \$0

Direct offsetting revenue: \$0

Net community benefit expense: \$0

Percent of total expense: 0%

Estimated expense of activities projected for the next Fiscal Year: \$0

## **(9) Cash and in-kind contributions for community benefit *(Included in other sections.)***

Total community benefit expense: \$0

Direct offsetting revenue: \$0

Net community benefit expense: \$0

Percent of total expense: 0%

Estimated expense of activities projected for the next Fiscal Year: \$0

## **(10) Total Other Benefits**

Total community benefit expense: \$19,049,919.45

Direct offsetting revenue: \$13,798,621.69

Net community benefit expense: \$5,251,297.76

Percent of total expense: 5.4%

Estimated expense of activities projected for the next Fiscal Year: \$5,409,281

## **(11) Totals**

Total community benefit expense: \$30,959,280.9

Direct offsetting revenue: \$20,749,833.28

Net community benefit expense: \$10,209,447.62

Percent of total expense: 10.4%

Estimated expense of activities projected for the next Fiscal Year: \$10,389,971.81

## SECTION 5: COMMUNITY BUILDING ACTIVITIES

**TOTAL EXPENSE (ENTERED AT TOP OF SECTION 4): \$97,760,447**

### Community support

Total community benefit expense: \$14,008.90

Direct offsetting revenue: \$0

Net community benefit expense: \$14,008.90

Percent of total expense: 0%

## SECTION 6: MEDICARE

Total revenue received from Medicare (\$ -- including DSH and IME): 0

Medicare allowable costs of care relating to payments specified above (\$): 0

Medicare surplus (shortfall): \$0

Describe the extent to which any shortfall reported above should be treated as community benefit. Please also describe the costing methodology or source used to determine the amount reported above.

NONE PROVIDED

Describe the costing methodology or source used to determine the amount reported above. Please check the boxes below that describe the method used: NONE PROVIDED

## SECTION 7: SUMMARY FINANCIAL MEASURES

Gross Receipts from Operations: \$196,272,498.76

Net operating costs: \$97,760,447

Ratio of gross receipts from operations to net operating costs: 2.008

### UNREIMBURSED COMMUNITY BENEFIT COSTS

Financial Assistance and Means-Tested Government Programs: \$4,958,149.86

Other Community Benefit Costs: \$5,251,297.76

Community Building Activities: \$14,008.9

Total Unreimbursed Community Benefit Expenses: \$10,223,456.52

Net community benefit costs as a percent of net operating costs: 10.46%

### OTHER COMMUNITY BENEFITS (OPTIONAL)

Leveraged Revenue for Community Benefit Activities: NONE PROVIDED

Medicare Shortfall: \$0

# SECTION 8: COMMUNITY ENGAGEMENT IN THE COMMUNITY BENEFITS PROCESS

Community Organizations, Local Government Officials and other Representatives of the Public:	Identification of Need	Prioritization of Need	Development of the Plan	Commented on Proposed Plan
Huggins Hospital staff & Board of Trustees	Yes	Yes	Yes	Yes
Carroll County Coalition for Public Health	Yes	Yes	Yes	Yes
Granite VNA	Yes	Yes	Yes	Yes
Northern Human Services	Yes	Yes	Yes	Yes
Patients/Community	Yes	Yes	Yes	Yes
Genesis Wolfeboro Bay Center	Yes	Yes	Yes	No
Eastern Lakes Region Housing Coalition	Yes	Yes	Yes	No
NH DHHS Office of Rural Health & Primary Care	Yes	Yes	Yes	Yes
Service Link	Yes	Yes	No	No
Starting Point Services for Victims of Domestic & Sexual Violence	Yes	Yes	No	No
White Horse Recovery	Yes	Yes	No	No
Wolfeboro Economic Development Corporation	Yes	Yes	No	No
Wolfeboro Chamber	Yes	No	No	No
Ossipee Police Department	Yes	No	No	No

**Please provide a description of the methods used to solicit community input on community needs:**

Huggins Hospital analyzed community health data and conducted community surveys to begin the community needs assessment process. Huggins Hospital also presented the data and analysis to the community during the hospital's Community Health Focus Groups. The groups provided an opportunity for community members and local health agencies to determine significant health needs and goals for improvement. Over sixty individuals from multiple community and healthcare organizations collaborated to conduct a comprehensive Community Health Needs Assessment process focused on identifying significant health needs, issues and concerns of the community. The process centered on gathering and analyzing data as well as receiving input from persons who represent the broad interests of the community and who have special knowledge and expertise in public health. The participants helped provide direction for the Hospital to create a plan to improve the health of the community.

# SECTION 9: CHARITY CARE COMPLIANCE

The valuation of charity does not include any bad debt, receivables or revenue. Yes

A written charity care policy is available to the public. Yes

Any individual can apply for charity care. Yes

Any applicant will receive a prompt decision on eligibility and amount of charity care offered. Yes

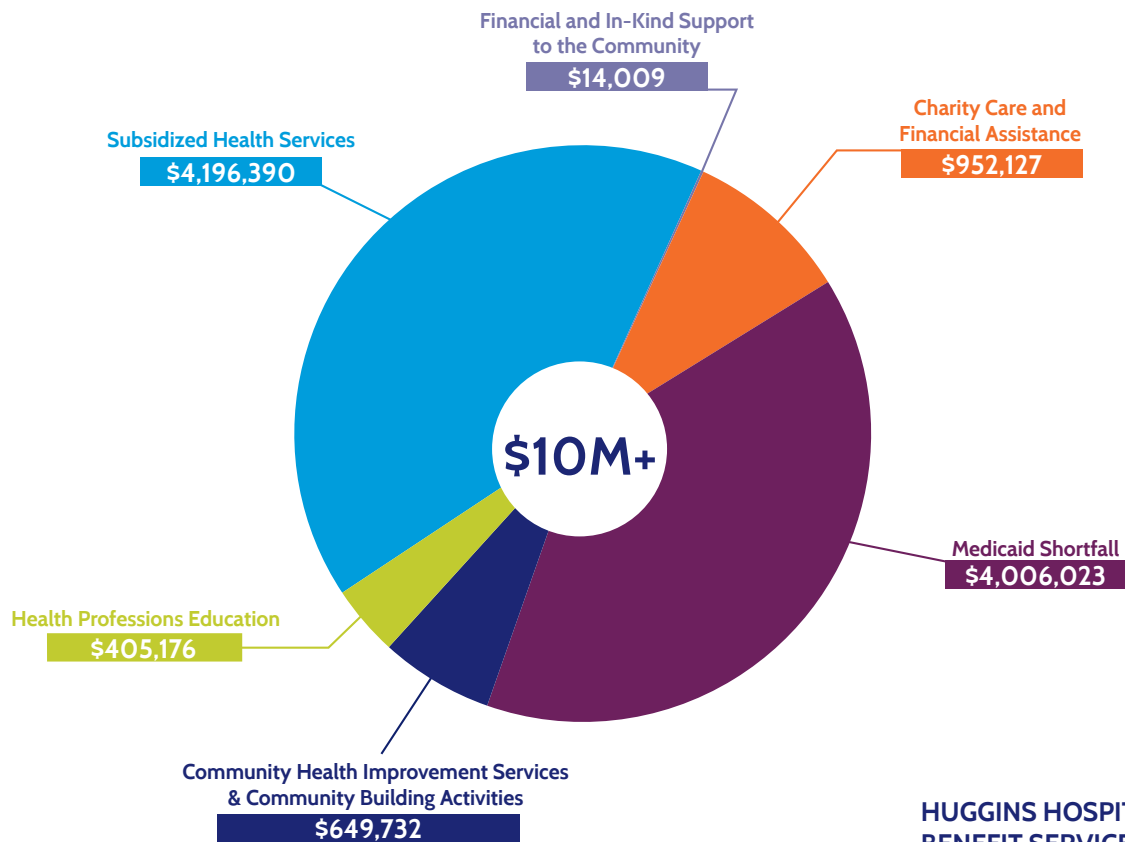
Notice of the charity care policy is posted in lobbies. Yes

Notice of the policy is posted in waiting rooms. Yes

Notice of the policy is posted in other public areas of our facilities. Yes

Notice of the charity care policy is given to recipients who are served in their home. N/A

## 2023 COMMUNITY BENEFITS = \$10,223,457



### HUGGINS HOSPITAL COMMUNITY BENEFIT SERVICES

- Paramedic Intercept Program
- Primary Care Services in Rural Communities
- Free Health Care Services
- Community Health Education
- Financial Assistance Services
- Health Professions Training
- Support to Local Social Service Agencies
- Medications for Emergency Service Organizations
- Rural Workforce Development
- Economic Development